



COLOMBA MANSIONS

HAŽ - ŽEBBUĠ



FULANI
PROPERTIES

A Famalco Company

A smart move to quality living.



Welcome to Colomba Mansions

Colomba Mansions is situated on the outskirts of Haz-Zebbug, Malta and is an important addition to Fulani's portfolio of residential properties. The readily available development accommodates 58 apartments, serviced through 5 separate entrances, and garages on two basement levels, as well as Class 4B outlets. Residential units include apartments and penthouses, with a choice of 1, 2 or 3 bedroom varying in size and layout and which enjoy ample natural daylight from both front and back balconies.

Get in touch with us to schedule a viewing appointment and get ready to a **smart move to quality living.**



Contact Us

-  (+356) 7947 8478
(+356) 7949 5373
-  info@fulani.mt
-  www.fulani.mt





Triq J.P. Vassallo



Triq J.P. Vassallo



Triq Michael Debono



Triq Michael Debono





Block C

Block D

Block E

C14
C12
C11
C9
C8
C6
C5
C3
C2

D14
D13
D12
D11
D10
D9
D8
D6
D5
D4
D3
D2
D1

E10
E9 &
E8
E7 &
E6
E5 &
E4
E3 &
E2
E1 &

Outlet 4

D

E

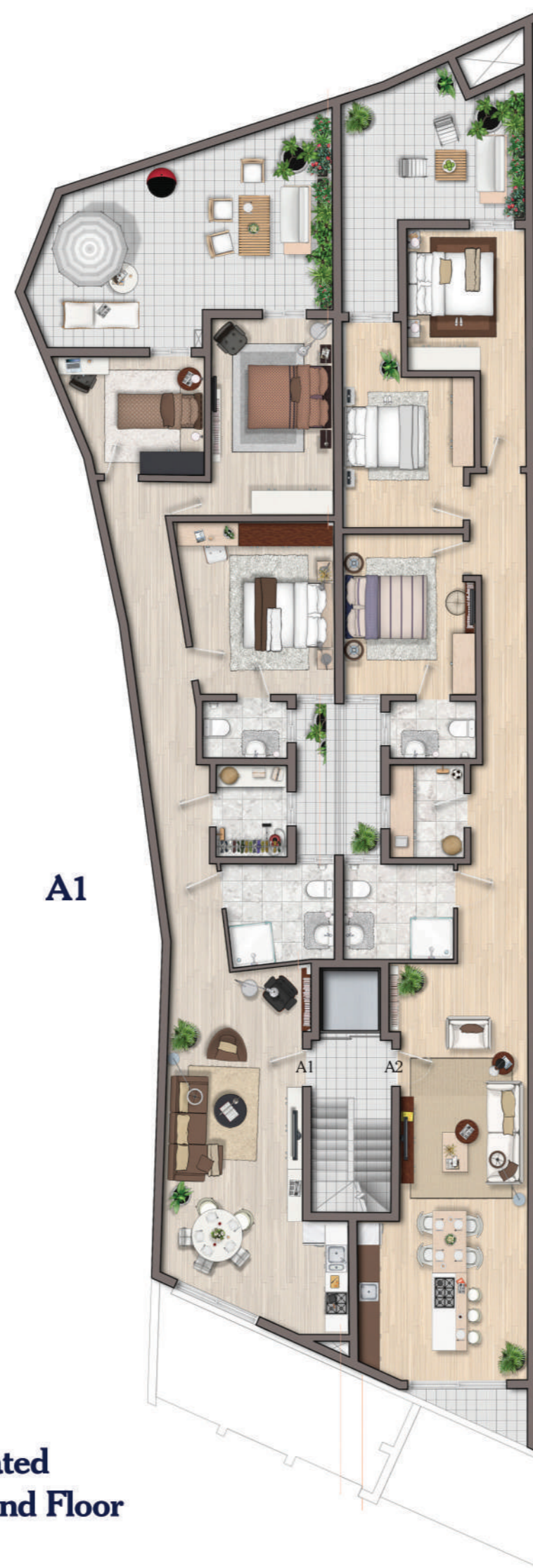
Outlet 5

Entrance to garage

♿ Designed according to guidelines by the commission for the right of people with disability (CRPD)

Block A Apartment 1

Bedrooms: 3
Internal Area: 132.25m²
External Area: 43.02m²
CRPD Access-For-All: Yes



**Elevated
Ground Floor**

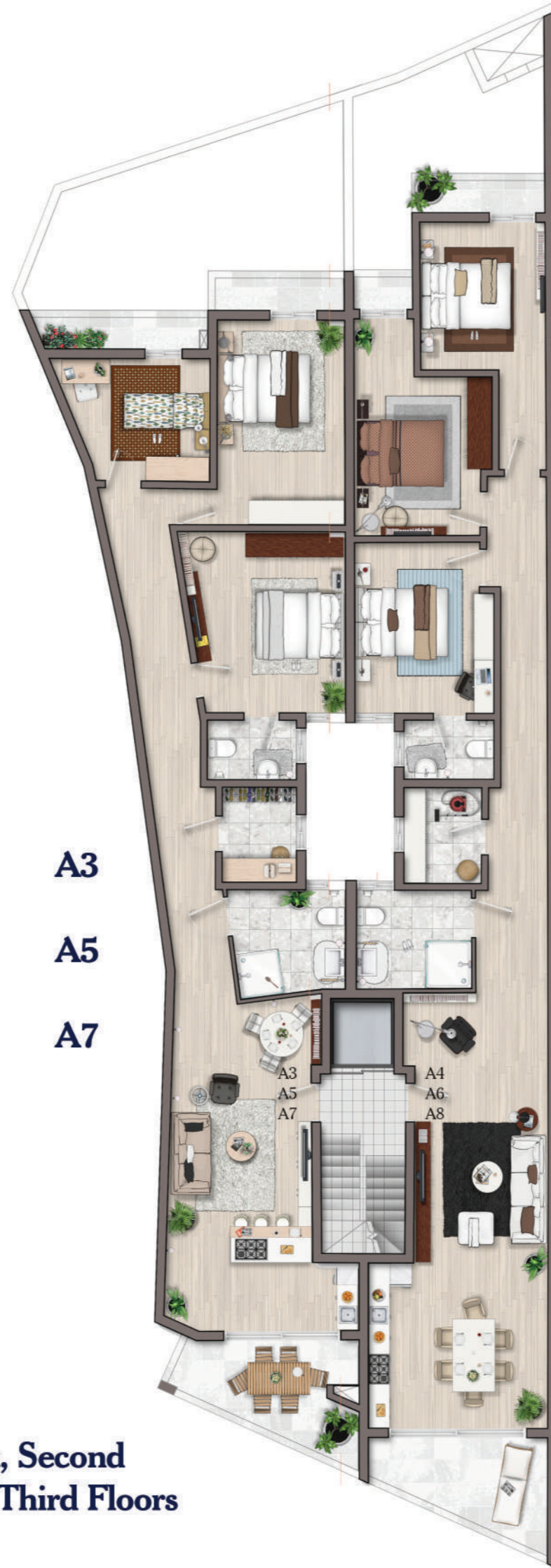
Block A Apartment 2

Bedrooms: 3
Internal Area: 140.47m²
External Area: 28.06m²
CRPD Access-For-All: Yes

A smart move
to quality living.

Block A Apartments 3, 5, 7

Bedrooms: 3
Internal Area: 132.25m²
External Area: 19.48m²
CRPD Access-For-All: Yes



**First, Second
and Third Floors**

Block A Apartments 4, 6, 8

Bedrooms: 3
Internal Area: 138.94m²
External Area: 16.31m²
CRPD Access-For-All: Yes

**A smart move
to quality living.**

Block A Penthouse 9

Bedrooms: 3
Internal Area: 120.20m²
External Area: 26.05m²



Penthouse Floor

Block A Penthouse 10

Bedrooms: 3
Internal Area: 123.20m²
External Area: 25.34m²

A smart move
to quality living.

Block B Apartment 1

Bedrooms: 3
Internal Area: 119.09m²
External Area: 34.50m²



B1



B2

**Elevated
Ground Floor**

Block B Apartment 2

Bedrooms: 3
Internal Area: 118.43m²
External Area: 38.30m²

A smart move
to quality living.

Block B Apartments 3, 5, 7

Bedrooms: 3
Internal Area: 122.30m²
External Area: 13.26m²



**First, Second
and Third Floors**

B3
B5
B7



B4
B6
B8

Block B Apartments 4, 6, 8

Bedrooms: 3
Internal Area: 118.43m²
External Area: 19.83m²

A smart move
to quality living.

Block B Penthouse 9

Bedrooms: 2
Internal Area: 99.85m²
External Area: 24.27m²



Penthouse Floor

Block B Penthouse 10

Bedrooms: 3
Internal Area: 109.07m²
External Area: 28.42m²

A smart move
to quality living.

Block C Apartment 1

Bedrooms: 3
Internal Area: 124.17m²
External Area: 39.50m²



C1



**Elevated
Ground Floor**

C3

C2

Block C Apartment 3

Bedrooms: 2
Internal Area: 82.60m²
External Area: 7.56m²

Block C Apartment 2

Bedrooms: 2
Internal Area: 88.59m²
External Area: 4.96m²



Block C Apartments 4, 7, 10

Bedrooms: 3
Internal Area: 124.10m²
External Area: 19.83m²



First, Second and Third Floors

Block C Apartments 5, 8, 11

Bedrooms: 3
Internal Area: 108.75m²
External Area: 19.95m²

Block C Apartments 6, 9, 12

Bedrooms: 2
Internal Area: 81.63m²
External Area: 9.63m²



Block C Penthouse 13

Bedrooms: 3
Internal Area: 113.96m²
External Area: 26.21m²



Penthouse Floor

Block C Penthouse 14

Bedrooms: 3
Internal Area: 106.42m²
External Area: 89.97m²



D3



D2
D1

**Elevated
Ground Floor**

Block D Apartment 3

Bedrooms: 2
Internal Area: 89.17m²
External Area: 25.76m²

Block D Apartment 2

Bedrooms: 2
Internal Area: 84.50m²
External Area: 5.50m²

Block D Apartment 1

Bedrooms: 2
Internal Area: 92.41m²
External Area: 7.00m²

A smart move
to quality living.



D6
D9
D12



D5
D8
D11

D4
D7
D10

Block D Apartments 6, 9, 12

Bedrooms: 2
Internal Area: 98.66m²
External Area: 13.75m²

Block D Apartments 5, 8, 11

Bedrooms: 2
Internal Area: 83.14m²
External Area: 11.90m²

Block D Apartments 4, 7, 10

Bedrooms: 2
Internal Area: 93.47m²
External Area: 8.95m²

**First, Second
& Third Floors**

**A smart move
to quality living.**





Block D Penthouse 13

Bedrooms: 3
Internal Area: 128.94m²
External Area: 52.11m²

Block D Penthouse 14

Bedrooms: 2
Internal Area: 94.70m²
External Area: 24.33m²

Penthouse Floor



A smart move
to quality living.

Block E Apartment 1

Bedrooms: 2
Internal Area: 97.82m²
External Area: 32.27m²
CRPD Access-For-All: Yes



Elevated Ground Floor



Block E Apartment 2

Bedrooms: 1
Internal Area: 85.16m²
External Area: 4.60m²

A smart move
to quality living.

Block E Apartments 3, 5, 7

Bedrooms: 2
Internal Area: 98.72m²
External Area: 15.18m²
CRPD Access-For-All: Yes



First, Second & Third Floors



Block E Apartments 4, 6, 8

Bedrooms: 1
Internal Area: 84.94m²
External Area: 12.64m²

**A smart move
to quality living.**

Block E Penthouse 9

Bedrooms: 2
Internal Area: 87.54m²
External Area: 18.16m²
CRPD Access-For-All: Yes



Penthouse Floor



Block E Penthouse 10

Bedrooms: 1
Internal Area: 63.27m²
External Area: 28.38m²

A smart move
to quality living.

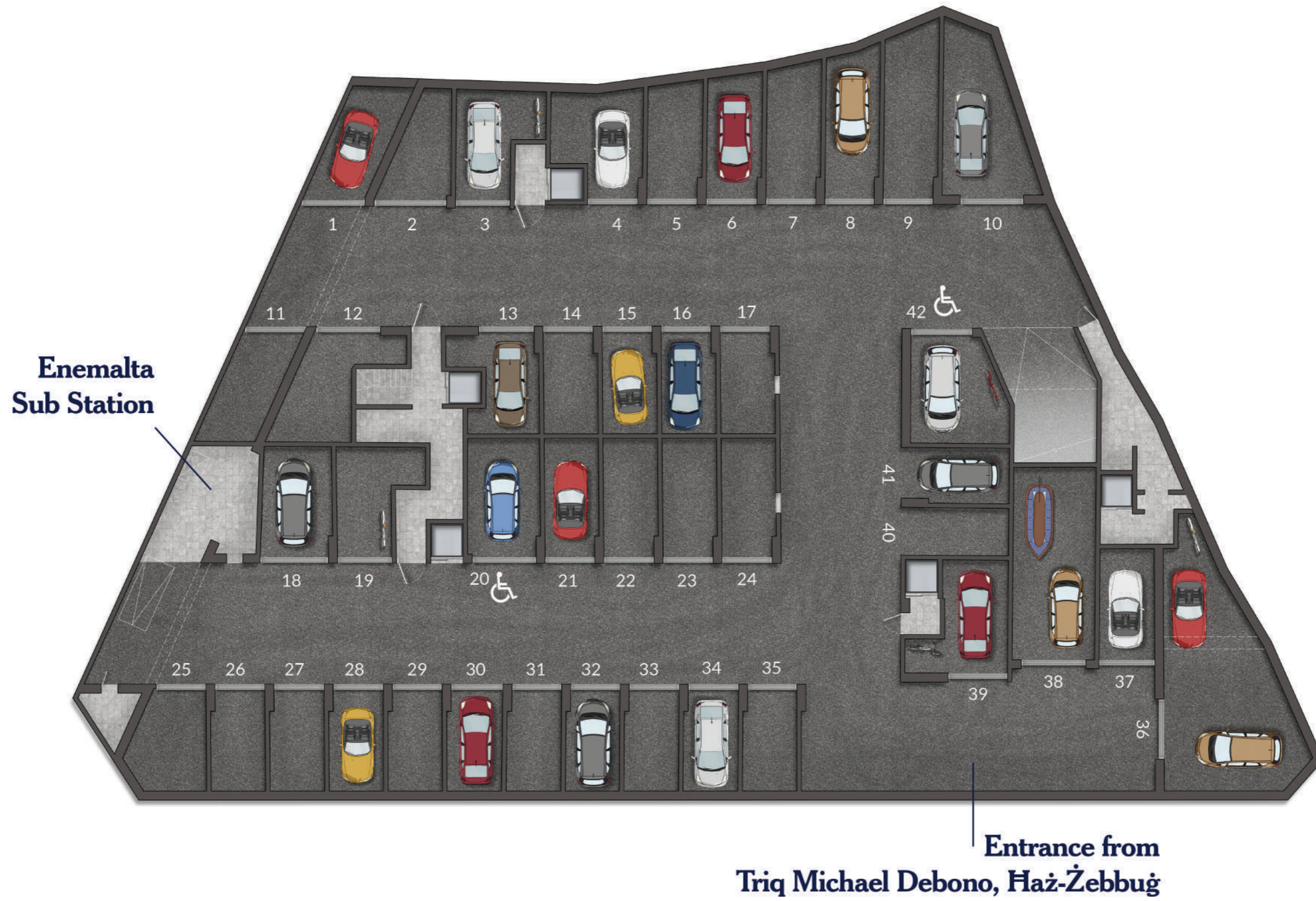
Entrance from
Triq J.P. Vassallo, Haż- Żebbuġ



Basement -1

Class 4B Outlets

- No. 1 95.01m²
- No. 2 53.16m²
- No. 3 126.76m²
- No. 4 70.07m²
- No. 5 60.53m²



Basement -2



FULANI
PROPERTIES

www.fulani.mt

Fulani Properties Limited is a subsidiary company of Famalco Holdings Limited (Famalco). Famalco is an investment management company operating in Malta, and since its inception two decades ago, there has been a consistency throughout on its highly diversified business model. Ever since starting up in September 2004, Fulani Properties has immersed itself in the property development and management business, to establish itself as a competitive entity within the sector.

The success within the industry allows for the continual growth of the company and further development within targeted areas. Fulani Properties Ltd caters for its vast property portfolio, including the maintenance and day-to-day property related operations. Fulani's property portfolio includes residential and commercial developments mainly in Attard, Zebbug, Santa Venera, Birkirkara, Zebbiegh and Wardija.